

**OTTER POINT & SHIRLEY
RESIDENTS & RATEPAYERS ASSOCIATION (OPSRRA)
INFORMATION UPDATE July 2013**

CELEBRATING 10 YEARS OF PUBLICATION!
We began publishing this newsletter in June 2003



The Otter Point & Shirley Residents & Ratepayers Association (OPSRRA) is a registered non-profit society with an elected Board of Directors and strives to present the points-of-view of its members to local government. OPSRRA was founded in 1992 and has a membership of over **400**. Any resident or property owner in Shirley and Otter Point who are age 18 or over are eligible for membership.

Lifetime memberships cost \$5.00 per person and are available from OPSRRA directors—see our web site (www.opsrra.ca) for further information and on-line registration. Associate (non-voting) memberships are available for persons who do not reside or own property in Shirley or Otter Point, but who wish to support the Association.

Our society's purpose is to:

- Ensure that the development of the two communities of Shirley and Otter Point takes place in an orderly way and in the best interests of its residents.
- Co-operate with local government and other public bodies in the furtherance of the objectives of the society and benefits to the community.
- Concern itself with the performance of government agencies.
- Encourage citizens to stand for public office.
- Promote community spirit and sense of identity by organizing or supporting appropriate activities.

Are you an OPSRRA member? Do you want to receive the OPSRRA newsletter and notice of meetings directly to your email address? OPSRRA now emails this newsletter to over **300** of our members as well as local elected representatives, media and archival organizations. Contact Arnie Campbell at: opsrra@gmail.com if you want to receive this membership service.

OPSRRA's EXECUTIVE AND DIRECTORS

Fiona McDannold President
Phone: 250-646-2730

Bob Philips Vice-President
Phone: 250-642-3297

Brenda Mark Treasurer
Phone: 250-646-2598

Sandy Barta Director

Arnie Campbell Director
Phone: 250-642-3113

Brooke Fader Director

Chris Knoglinger Director
Phone: 250-646-2911

Marika Nagasaka Director
Phone: 250-642-2133

Note: Contact any OPSRRA director at the following email address:
opsrra@gmail.com

IN THIS ISSUE

Contents

1. UPCOMING MEETINGS AND EVENTS.....	3
2. JORDAN RIVER OFFICIALLY PART OF OPSRRA.....	6
3. WE NEED YOUR PARTICPATION.....	6
4. AMALGAMATION AND JDFEA GOVERNANCE SURVEY RESULTS.....	6
5. TIMBERWEST LOGGING IN JACOB'S CREEK (SHIRLEY) AREA.....	8
6. UPDATE: OTTER POINT EMERGENCY PREPAREDNESS.....	10
7. JDFEA ADMIN SERVICES BUILDING CONSTRUCTION UNDER WAY.....	11
8. REGIONAL DIRECTOR'S REQUEST FOR A DISPUTE RESOLUTION DENIED.....	12
9. JDFEA ASKING CRD AND PROVINCE FOR SOME CHANGES.....	12
10. DID YOU KNOW THAT	12
11. OPSRRA SMALL BUSINESS LISTINGS.....	13
12. BACK ISSUES OF THE OPSRRA NEWSLETTER.....	15

1. UPCOMING MEETINGS AND EVENTS

Contact Arnie Campbell at: opsrra@gmail.com or **250-642-3113** to have your community event listed in our monthly community events calendar.

Tuesday
July 2 **Juan de Fuca Emergency Services**
Monthly Meeting
7:00 p.m.
JDF Search & Rescue Campus Training Building
2028C Idlemore Road Sooke BC

Wednesday
July 3 **Sooke & Electoral Area Parks & Recreation**
Commission (SEAPARC)
Monthly Meeting
7:00 p.m.
Board Room
SEAPARC Leisure Complex
2168 Philips Road Sooke BC

Saturday
July 6 **Juan de Fuca Community Trails Society**
Hike to Shields Lake
9:00 a.m.

Meet in the upper parking lot at the Sooke Potholes. There is a **\$2.25 parking fee** at this time of the year.

A 15 km return hike to Shields Lake, elevation 420 metres. A single track forest trail with good footing.

Bring lunch, water, and dress for the weather.

Please register by email after April 10.

Phone Rosemary Jorna, 250-642-2767
or email sid2767@shaw.ca for details.
Web site:
www.jdfcommunitytrails.ca

Wednesday
July 10 **Shirley Community Association**
Bi-Monthly Meeting
7:30 p.m.
Shirley Community Hall

Saturday
July 13

**Juan de Fuca Parks and Recreation Commission &
Juan de Fuca Community Trails Society
Hike Thetis Lake to Francis King**

9:00 a.m.

Meet at the William Simmons Memorial Park parking lot.
(Turn into the Sooke Business Park at 3220 Otter Point
Road; the parking lot is behind the berm immediately to the
left.)

A 15 km hike, rated difficulty level 3. The terrain is up and
down, but with little elevation change. Good footing
everywhere. Beautiful forests, rock outcroppings, and
mosses.

Contact Sid for more information: JdF.CTS@gmail.com

Tuesday
July 16

**JDF Electoral Area Land Use Committee (LUC)
Meeting**

7:00 p.m.

JDF Electoral Area Planning Services Meeting Room
2-6868 West Coast Road, Sooke BC

Obtain the agenda the Friday before the meeting on the
CRD website at:

http://www.crd.bc.ca/agendas/juandefucalandusecom_/index.htm

Select the year and month of the agenda you wish to read.

The staff reports that accompany each meeting are
available:

http://www.crd.bc.ca/reports/juandefucalandusecom_/2013_index.htm

Saturday
August 3

**Juan de Fuca Community Trails Society
Hike a segment of the Juan de Fuca Marine Trail**

9:00 a.m. to 5:00 pm

We haven't decided which segment we will hike, but it will
be a full day including driving time.

Bring a camera, lunch, snack and water. Dress for the
weather.

Contact Rosemary Jorna, sid2767@shaw.ca for details.

Web site:

www.jdfcommunitytrails.ca

Tuesday
August 6

**Juan de Fuca Emergency Services
Monthly Meeting**

7:00 p.m.

JDF Search & Rescue Campus Training Building
2028C Idlemore Road Sooke BC

Sunday
August 18 **Shirley Day**
11:00 a.m. to 8:00 p.m.
Shirley Community Hall
Music, crafters, concession, children's games, etc.
Salmon BBQ

Mondays **Karate for all ages**
6:30 to 8:00 p.m.
Shirley Community Hall
Contact Alida Long: 250-642-4631

Mondays **Pilates**
10:00 to 11:00 a.m.
Shirley Community Hall
Level 1 class (suitable for beginners)
Contact Sandra Smith:
website: www.svakayoga.com
email: svakayoga@gmail.com

Thursdays **Shirley Quilters and Crafters**
10:00 a.m. to 4:00 p.m.
Shirley Community Hall

Everyone welcome
Contact Christien Shipton: 250-646-2687

Saturdays **Pilates**
9:30 am
Shirley Community Hall
Level 1 class (suitable for beginners)
Contact: Sandra Smith
website: www.svakayoga.com
email: svakayoga@gmail.com

Thursdays &
Sundays **Nia Dance / Movement Class**
Thursdays: 6:45 to 8:00 p.m.
Sundays: 11:00 a.m. to 12:15 p.m.
Shirley Community Hall
Contact Melody Kimmell:
250-646-2995
movingmelody@gmail.com

Every Sunday
May 5 to
September 29 **Shirley Market**
10:30 a.m. to 3:30 p.m.
Pioneer Park next to the Shirley Hall



2. JORDAN RIVER OFFICIALLY PART OF OPSRRA

Great news: after a two month wait the province has approved the changes to the OPSRRA constitution and bylaws that were passed by the membership at the April, 2013 Annual General Meeting. Most important of these changes was the decision to expand the Association's boundaries to include the community of Jordan River. This boundary change means that OPSRRA can immediately extend full membership privileges to the 19 associate members from Jordan River and confirm the director's position filled by Chris Knoglinger from Jordan River.

View complete details of the new OPSRRA constitution and bylaws on the OPSRRA web site: www.opsrra.ca

3. WE NEED YOUR PARTICPATION

OPSRRA originated in 1992 as the Otter Point & Shirley Residents & Ratepayers Association. With the recent addition of the community of Jordan River to the Association, we'll have to decide if we need a name change. There's also the suggestion of having an OPSRRA logo and some designs were circulated last fall for comment. Do we want a logo? If so, what should it look like?

Your directors have been reviewing suggestions for a new name for the association as well as number of possible logos. We need help.

Let us know if you're interested in joining a sub-committee of the board of directors to review and recommend on these two important matters. Contact any of the OPSRRA directors or email your reply to OPSRRA at opsrra@gmail.com

4. AMALGAMATION AND JDFEA GOVERNANCE SURVEY RESULTS

Amalgamation

There is interest in regional amalgamation coming from different parts of the Capital Regional District (CRD). It may become a referendum issue for the November 2014 municipal elections and could have implications for the Juan de Fuca Electoral Area and the communities of Otter Point, Shirley and Jordan River.

In April of this year, Metchosin Mayor John Ranns put forward his suggestion to have six municipalities for the CRD including creating a rural municipality for Otter Point, Shirley, Jordan River and Port Renfrew (population of 2,500 to 3,000). Under his proposal the remainder of the CRD would be reorganized as follows:

- An urban municipality taking in part of Saanich, Oak Bay, Victoria, Esquimalt, View Royal, Langford and Colwood, with a total population of about 264,000.
- A Saanich Peninsula municipality that includes the rural portion of Saanich, along with Central Saanich, North Saanich and Sidney (population: 53,000).
- A rural Highlands municipality that swallows Willis Point and some of the Malahat (population: 2,300).
- Sooke (population: 11,000).
- A rural municipality that includes Metchosin and East Sooke (population: 7,000).

Another group called *Amalgamation Yes* has been holding public meetings in the Greater Victoria Area and lobbying for an amalgamation study. They describe themselves as:

“... a non-partisan, non-profit organization dedicated to bringing about a referendum on the issue of municipal amalgamation in the Capital Regional District (CRD). We are convinced that the current fragmented local governance model, consisting of 13 separate municipalities, is not the most effective means of governing the region. We also believe that only through Citizen Advocacy will any change to our local governance occur. As a group, we do not support any particular model of amalgamation, but we do believe that fewer municipal governments will better position the region to face current and future challenges.

Our goal is to use every means at our disposal to bring about a referendum in conjunction with the next Municipal elections, currently scheduled for November, 2014. A positive vote would provide the Minister of Community, Sport & Cultural Development with a public mandate upon which to order an in depth study into municipal amalgamation models, conduct public hearings and present options upon which a second (and binding) referendum could be held.”

Find more information about *Amalgamation Yes* on their web site:

<http://amalgamationyes.ca/>

Governance Survey

May's OPSRRA survey asked your opinion about how well you felt the present form of governance for the Juan de Fuca Electoral Area (JDFA) met your personal needs and those of the community. The survey also asked if you supported the idea of having a governance options study for our area. Eight possible governance options were suggested and we asked you to rate them.

Survey summary:

- 50% felt satisfied that the present model of governance in the Juan de Fuca Electoral Area met their personal needs (e.g. affordable taxes, access to elected representatives, bylaw enforcement, etc.).
 - 29% were neutral
 - 21% were not satisfied.
- 35% felt satisfied that the present model met the broader community's needs. (e.g. fire protection, land use planning, parks & trails, economic development, groundwater protection, rural life style).
 - 39% were neutral
 - 25% were not satisfied.

Note: These results indicate quite a difference between how well respondents feel the present JDFA governance model meets their personal needs vs. the community's broader needs.

- 93% were in favour of having a governance study to look at different governance options for the JDFA.
- The **least favoured** of the eight suggested governance options the survey asked you to rate were:
 - Amalgamating with Langford, Colwood, Metchosin and Sooke;
 - Amalgamating with the District of Sooke.
- The **most favoured** governance options were:

- Creating a separate electoral area for the area west of Sooke (i.e. Otter Point, Shirley, Jordan River, Port Renfrew and the Rural Resource Lands).
- Creating a new governance model for electoral areas that supports a desire to remain rural and allows for more participation in local decision-making.

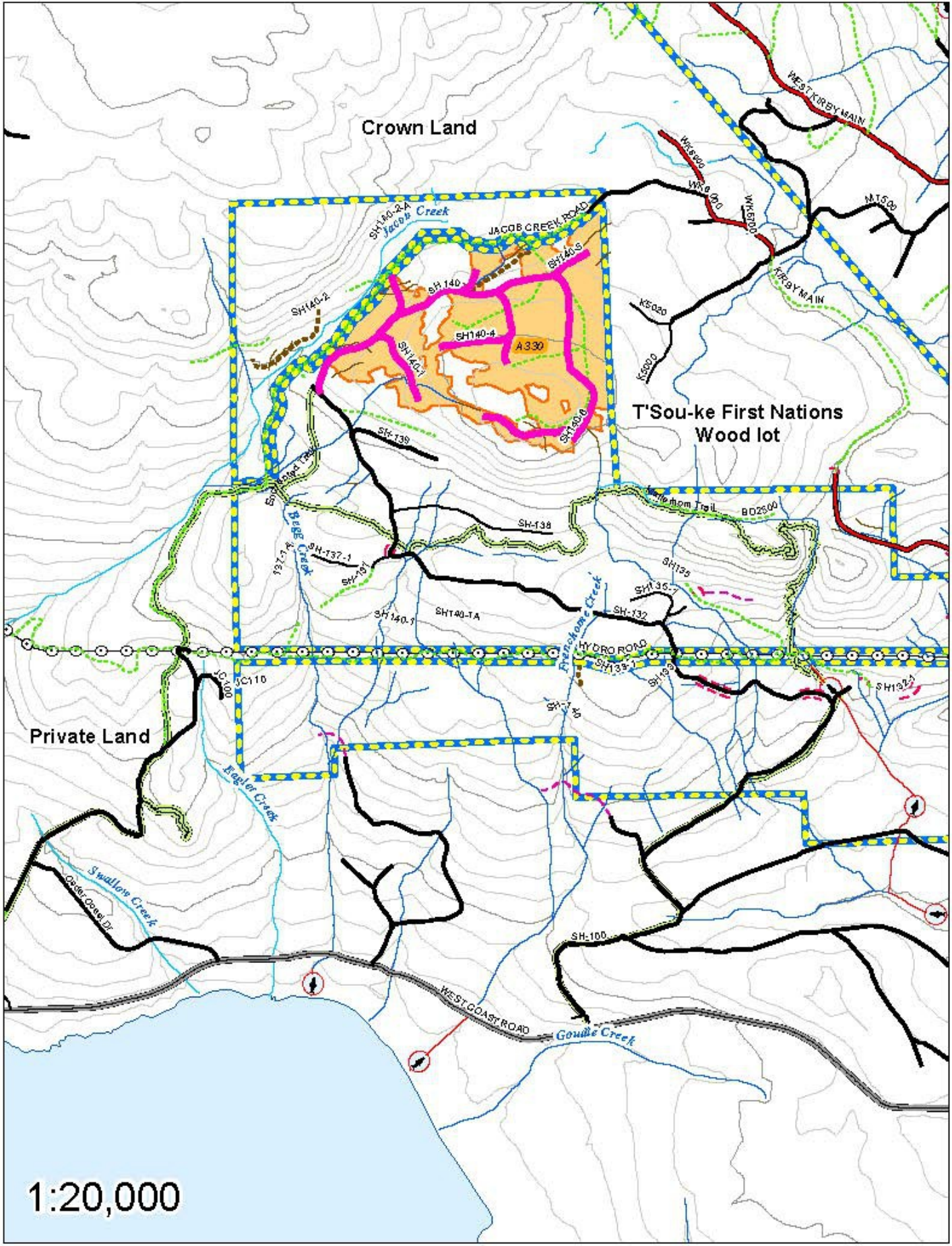
OPSRRA shared the results of the May governance survey with Regional Director Hicks and John Horgan, MLA. The full results from this survey, including the comments received, were included in last month's newsletter.

5. TIMBERWEST LOGGING IN JACOB'S CREEK (SHIRLEY) AREA

Road construction started last week and harvesting will continue through until November on TimberWest's private forest lands near Jacob's Creek in Shirley. The logging area is over the ridge and north of the Matterhorn Trail and so won't impact this trail. However, part of the Enchanted Trail and the Jacob Creek Road will have flagging and signage.

TimberWest will be logging 7 days a week, but only hauling logs on week days. TimberWest asks that you let them know if you have any concerns.

Map showing the TimberWest logging area north of the Matterhorn Trail in Shirley (on next page, not to scale).



6. UPDATE: OTTER POINT EMERGENCY PREPAREDNESS

Al Wickheim, Otter Point's Volunteer Coordinator for Community Emergency Preparedness, submitted the following:

A great deal has been accomplished in Otter Point in the past few months with respect to Community Emergency Preparedness and our local Pod Program. Access and egress routes from the coast in particular have been identified and are being mapped and will be marked in the near future. Be aware of these routes as they become posted as they may become a high priority in your life some dark and stormy night. Some pathway improvements and public awareness campaigns have also brought the 'local bypass' options onto people's radar as well. These pathways are meant to accommodate pedestrian and bicycle or horseback traffic, not motorcycle, ATV or 4 WD traffic which tend to be quite destructive of peace and property. The west end of Gordon's Beach and above Wells O' Weary and around the Kemp Lake Store in particular for the Otter Point area are areas of interest for evacuation planning.

As well, a new bit of signage can be seen near the coastline at strategic points - they are blue and white and indicate approximate elevation above sea level - keep in mind that should a tsunami alert be issued - or severe earthquake felt, we are recommending being at least 100 ft. / 30 m above sea level.

For more information on this topic visit:

http://embc.gov.bc.ca/em/hazard_preparedness/Tsunami_Brochure/Prepare_for_Tsunami.html

Royal Roads University recently undertook a project to comprehensively assess our Community Emergency Preparedness Program and was very impressed with our status of community awareness and preparation - to the point that Otter Point, Shirley and Port Renfrew are considered a "Role Model Communities" in the UN International Strategy for Disaster Reduction. This, in short, means we are well established in our preparations for a variety of potential natural disasters. Their report, plus the latest Tsunami Inundation map will be on-line in the near future.

Public Awareness efforts, whether through local contacts, world events shown on the news or internet sites have in a very few years made living hazard zones around the world a much more survivable situation. This is good news since about 90% of the world's population lives in the path of disaster, on coastal plains, at the base of volcanoes and near rivers that flood. The recognition of danger signs and knowing what to do are key points in individual and community survival.

Be proud of where we live, take the hazards in stride - we know what the hazards are, how to recognize and survive them and then how to recover from their effects. Businesses are particularly vulnerable during disasters, but they can also play a critical role in Community Response. Accommodation (guest awareness info packages), repair and construction companies and health support are just a few industries we need as partners in making the best of whatever Nature throws at us. For more information on this and more check out the EMBC website or contact your EMBC Community Coordinator. In Otter Point call Al Wickheim: 250-642-5124 or e-mail

info@wilderquestadventures.com and in Shirley contact Dominique Benardet: 250-646-2528, email djlb@telus.net

Be well and stay informed and we will continue to work towards developing more secure and response-able community initiatives. And of course, as always we invite and encourage you to think globally, act locally and help make it happen whatever the cause.

7. JDFEA ADMIN SERVICES BUILDING CONSTRUCTION UNDER WAY

The construction of the new Admin Services building for the Juan de Fuca Electoral Area (JDFEA) began several weeks ago.

The building will replace the rented facility in Sooke used by JDFEA Planning Services, Building Inspection, Parks & Recreation and Bylaw Enforcement personnel. The new facility is located in the Business Park, 3220 Otter Point Road in Otter Point. The budget for the project is \$1,500,000 including \$400,000 for the purchase of the property and a \$200,000 contingency fund.

Because the Business Park isn't serviced by municipal water and drilled wells have proven to be inadequate, the building will use rainwater capture and storage. Four underground tanks with a total capacity of 28,500 gallons have been installed:

- 2-5,000 gallon tanks for fire fighting (10,000 gallons);
- 1-5,000 gallon tank "grey water" (water from sinks and shower will be saved, treated a little and returned to the toilets);
- 1-3,500 gallon drinking water tank.



JdFEA Admin Services Building under construction, June 29, 2013. Four rainwater storage tanks installed to the left, and forming for the foundation underway.

8. REGIONAL DIRECTOR'S REQUEST FOR A DISPUTE RESOLUTION DENIED

This past March, Regional Director Hicks successfully convinced the Capital Regional District (CRD) Board of Directors that the Juan de Fuca Electoral Area (JdFEA) should have access to a dispute resolution mechanism when a JdFEA Official Community Plan (OCP) is determined to be inconsistent with the CRD's Regional Growth Strategy (RGS).

Presently, if a municipality has a dispute with the CRD Board over the consistency of their OCP with the RGS, the provincial Local Government Act sets out a variety of dispute resolution options. However, Electoral Areas through-out the province don't have access to these options under the legislation. CRD Planning Services staff proposed two alternatives to this situation:

- Adopt a policy to establish an internal dispute resolution process.
- Write a letter to the Minister for Community, Sport and Cultural development asking for a change to the provincial legislation.

View the staff report at:

http://www.crd.bc.ca/reports/planningtransportati_/2013_/02february27_/ppsjsdf20130117ptsjsd/ppsjsdf20130117ptsjsd.pdf

On June 6, 2013, the Province replied to the letter written to the Minister, saying that the Province was unable to change the provincial legislation to accommodate a dispute resolution mechanism for electoral areas. Their argument was that electoral areas are part of a regional district and not a separate local government like a municipality. Therefore, the provincial legislation which provides for dispute resolutions doesn't apply to electoral areas and changes to the legislation are not possible.

9. JdFEA ASKING CRD AND PROVINCE FOR SOME CHANGES

The regional directors for the Gulf Islands, Saltspring Island and the Juan de Fuca Electoral Area recently met with representatives from the Capital Regional District (CRD) to discuss problems that the three Electoral Areas are having with the CRD.

There were three outcomes from that meeting:

- At the moment the Province considers all of the CRD as urban and therefore ineligible for some provincial programs. There will be a report written by the CRD's Chief Executive Officer asking the CRD Board to ask the Province to consider the Electoral Areas in the CRD to be rural and therefore eligible for some of the provincial money and other considerations that are only available to "rural" Electoral Areas.
- The JDFEA will be given consideration for recognition as a separate entity within the CRD for purposes such as calling the new Admin Services building in Otter Point the JDFEA (and not the CRD) building.
- A consideration to allow the Electoral Areas to get their CRD support services at a reduced cost or, in lieu, be allowed to contract for some services as a cost savings.

10. DID YOU KNOW THAT ...

The river which runs through the community of Jordan River was probably named for a chaplain aboard a Spanish ship exploring the West Coast of Vancouver Island in 1790?

Records about the origin of the name are unconfirmed and sometimes conflicting.

The BC Geographical Names Office says the name was officially adopted in 1911, based on its existing use on British Admiralty charts. According to this source, the name was thought to have been given to the river in 1790 by:

“Sub-Lieutenant Manuel Quimper of the Spanish Navy, in command of the captured British sloop Princess Royal, while on an exploring voyage from Nootka along the Strait of Juan de Fuca.”

However, John Walbran’s British Columbia Coast Names says that it was:

“Probably named for a presbítero [priest], Alejandro Jordán, a chaplain for Eliza (editor’s note: Lieutenant Francisco Eliza rebuilt the Spanish fort at Nootka Sound and explored the West Coast). No mention of this name occurs in Quimper’s diary. Quimper named this “Rio Hermoso” on June 14, 1790. [Hermoso] does not appear on any map that I have seen, having been probably changed to Jordan when the Carta Reducida was made by López de Haro [later] in 1790.”

The present-day community of Jordan River was established in the 1880s as a logging camp. With the construction of the Jordan River Power project between 1909 and 1912 it became the largest community west of Victoria with more than a 1,000 workers on the construction site; some with families, who also lived in the Jordan River construction camp. A copper mining venture and frequent “boom and bust” cycles in the local forest industry followed over the next 100 years.

Do you have local historical information about Shirley or Otter Point that you would like to share, or questions that you would like answered? If so, let us know and we’ll try to help. Contact OPSRRA by email opsrra@gmail.com

11. OPSRRA SMALL BUSINESS LISTINGS

Do you operate a small business? Are you an OPSRRA member? OPSRRA is offering a free business listing service for members, on its web site: www.opsrra.ca. We will list non-members for a suitable donation!

The purpose of this service is to provide an opportunity for businesses in Jordan River, Shirley and Otter Point to advertise their goods and services to their local community. We anticipate having listings for accommodation, farm produce, art, furniture-making, fishing charters, eco-tours, firewood, knitting, soaps, landscaping, bookkeeping, sewing, spas and more. More information, businesses already listed, and an on-line registration form are available on OPSRRA’s web site (www.opsrra.ca) under **Business Listings**.

Note: OPSRRA does not accept responsibility for the services provided. Always check references and ask for confirmation of Work Safe B.C. Registration if applicable.

Support local businesses. The OPSRRA web site has more information about the following business listings

1001 Welding & Equipment Repair

Accent in Grooming

A Point of View B & B

ALM Organic Farm

Beaches West B & B

Bear Home Remodelling
Birds Edge Press
Coastal Crunch Granola
Eco Craft Lights
Eagle Cove Beachfront Guest Suites
Farmer Notary—Shawna Farmer, Notary Public.
Full Circle Seeds
Glen's Gardening Company
Heron's Rest B & B
"In A Fix" Bookkeeping & Accounting Services
Jambo Pet Sitting Service
Kemp Lake Store Cafe
Kirsten Sykes, Realtor
Knotty Beds by Nature
Le Sooke Spa
Malahat Farm Heritage Cottage
Ocean Wilderness Inn
Otter Point Beach House
Otter Point Electrical Service
Perfect Grade Plumbing
Reflexology by Marlene Barry
Rhythm's Edge Percussion Shop
Road's End Construction
Sandy's Drywall Ltd
Stick in the Mud Coffee House
Straitview Ridge Bed & Breakfast
Three Sisters Farm
Tugwell Creek Honey Farm
Tugwell Creek Meadery

Welcome Wagon

Wildewood Custom Homes

Wood Visions

12. BACK ISSUES OF THE OPSRRA NEWSLETTER

Back issues of the OPSRRA newsletter are available on the OPSRRA web site.

This monthly newsletter is prepared by the directors of OPSRRA. It is available to members by e-mail and to others on our web site: www.opsrra.ca.

To have an item you would like to have considered for placement in the newsletter, or make a comment about the newsletter, contact an OPSRRA director or email opsrra@gmail.com.

OPSRRA tries to verify the correctness of the information in this newsletter; if we got it wrong we will acknowledge that and make a correction as quickly as possible.
