

# OTTER POINT & SHIRLEY RESIDENTS & RATEPAYERS ASSOCIATION (OPSRRA) INFORMATION UPDATE **May 2013**

The **Otter Point & Shirley Residents & Ratepayers Association (OPSRRA)** is a registered non-profit society with an elected Board of Directors and strives to present the points-of-view of its members to local government. OPSRRA was founded in 1992 and has a membership of over **400**. Any resident or property owner in Shirley and Otter Point who are age 18 or over are eligible for membership.

**Lifetime memberships cost \$5.00 per person** and are available from OPSRRA directors—see our web site ([www.opsrra.ca](http://www.opsrra.ca)) for further information and on-line registration. Associate (non-voting) memberships are available for persons who do not reside or own property in Shirley or Otter Point, but who wish to support the Association.

Our society's purpose is to:

- Ensure that the development of the two communities of Shirley and Otter Point takes place in an orderly way and in the best interests of its residents.
- Co-operate with local government and other public bodies in the furtherance of the objectives of the society and benefits to the community.
- Concern itself with the performance of government agencies.
- Encourage citizens to stand for public office.
- Promote community spirit and sense of identity by organizing or supporting appropriate activities.

Are you an OPSRRA member? Do you want to receive the OPSRRA newsletter and notice of meetings directly to your email address? OPSRRA now emails this newsletter to over **300** of our members. Contact Arnie Campbell at: [opsrra@gmail.com](mailto:opsrra@gmail.com) you want to receive this membership service.

## OPSRRA's EXECUTIVE AND DIRECTORS

<b>Fiona McDannold</b>	President	<b>Bob Philips</b>	Vice-President
<b>Phone:</b>	<b>250-646-2730</b>	<b>Phone:</b>	250-642-3297
		<b>Brenda Mark</b>	Treasurer
		<b>Phone:</b>	250-646-2598
<b>Sandy Barta</b>	Director	<b>Arnie Campbell</b>	Director
		<b>Phone:</b>	<b>250-642-3113</b>
<b>Brooke Fader</b>	Director	<b>Chris Knoglinger</b>	Director
<b>Marika Nagasaka</b>	Director		
<b>Phone:</b>	250-642-2133		

**Note:** Contact any OPSRRA director at the following email address:  
[opsrra@gmail.com](mailto:opsrra@gmail.com)

## IN THIS ISSUE

### Contents

1. UPCOMING MEETINGS AND EVENTS.....	3
2. OPSRRA EXTENDS BOUNDARY TO INCLUDE JORDAN RIVER.....	8
3. NEW BOARD OF DIRECTORS ELECTED AT OPSRRA AGM.....	8
4. OPSRRA ANNUAL REPORTS TO MEMBERS.....	8
5. LOCAL FIRE DEPARTMENTS RECRUITING VOLUNTEERS.....	10
6. JORDAN RIVER COMMUNITY ASSOCIATION COMMENTS ON JORDAN RIVER PARKLAND.....	11
7. GOVERNANCE REPORT: CHALLENGE FOR CHANGES?.....	12
8. OPSRRA SURVEY: JDFEA GOVERNANCE.....	15
9. UPDATE: CRD'S REGIONAL GROWTH STRATEGY.....	15
10. QUESTIONS FOR PROVINCIAL ELECTION CANDIDATES.....	16
11. CAMP BARNARD HOSTING 2015 SCOUTING JAMBOREE.....	18
12. KEMP LAKE WATERWORKS ANNUAL GENERAL MEETING.....	19
13. JDFEA ADMIN SERVICES BUILDING GOES TO TENDER.....	20
14. REPORT: NEW TRAIL OPPORTUNITIES IN OUR AREA.....	21
15. OPSRRA SMALL BUSINESS LISTINGS.....	21
16. BACK ISSUES OF THE OPSRRA NEWSLETTER.....	23

## 1. UPCOMING MEETINGS AND EVENTS

Contact Arnie Campbell at: [opsrra@gmail.com](mailto:opsrra@gmail.com) or **250-642-3113** to have your community event listed in our monthly community events calendar.

---

Wednesday  
May 1

**Note:  
Meeting  
Cancelled**

**Sooke & Electoral Area Parks & Recreation  
Commission (SEAPARC)**  
Monthly Meeting  
7:00 p.m.  
Board Room  
SEAPARC Leisure Complex  
2168 Philips Road Sooke BC

---

Wednesday  
May 1

**All Candidates Meeting**  
**Carlos Serra (Green Party)**  
**Kerrie Reay (Liberal)**  
**John Horgan (NDP)**  
7:00 to 9:00 p.m.  
Prestige Hotel, Sooke

Organized by:  
Sooke Voice News and  
Sooke Region Chamber of Commerce

---

Saturday  
May 4

**Juan de Fuca Community Trails Society**  
**Big Trees Tour**  
9:00 a.m.

Meet at John Muir School  
**Make sure your gas tank is full!**

Possible car-pooling.

We will be driving to Port Renfrew and beyond with stops at several locations to hike into big trees.  
Have good foot wear and be prepared for mud.  
Four wheeled-drive recommended to reach the last tree.

A full day event. Pack a lunch, snacks, and prepare to stop for dinner.

Please register by email after April 10.

Phone Rosemary Jorna, 250-642-2767  
or email [sid2767@shaw.ca](mailto:sid2767@shaw.ca) for details.  
**Web site:**  
[www.jdfcommunitytrails.ca](http://www.jdfcommunitytrails.ca)

---

---

Monday  
May 6

**John Horgan**  
**Open House**  
4:00 to 6:00 p.m.  
Shirley Community Hall

Coffee and discussion of local and regional issues.

Organized by the Committee to re-elect John Horgan.  
Authorized by Kathy Palmer, Financial Agent 250-474-5511.

---

Monday  
May 6

**OPSRRA Board of Directors**  
**Monthly Meeting**  
**Members welcome!**

Note location change

7:30 p.m.  
Board Room  
SEAPARC Leisure Complex  
2168 Philips Road Sooke BC

Agenda available on request.  
Contact Arnie Campbell at [opsrra@gmail.com](mailto:opsrra@gmail.com)

---

Tuesday  
May 7

**Juan de Fuca Emergency Services**  
**Monthly Meeting**  
7:00 p.m.  
JDF Search & Rescue Campus Training Building  
2028C Idlemore Road Sooke BC

---

Wednesday  
May 8

**Shirley Community Association**  
**Monthly Meeting**  
7:30 p.m.  
Shirley Community Hall

---

Saturday  
May 11

**Juan de Fuca Parks and Recreation Commission & Juan de Fuca Community Trails Society**  
**Hike the east branch of Charters River to Mt. Manuel Quimper's base at Sooke Mountain Park**  
9:00 a.m.

Meet at the William Simmons Memorial Park parking lot to car pool to the trail head. (Turn into the Sooke Business Park at 3220 Otter Point Road; the parking lot is behind the berm immediately to the left.)

A 10 km hike.

Bring a lunch and water, and dress for the weather.

Contact Sid for more information: [JdF.CTS@gmail.com](mailto:JdF.CTS@gmail.com)

---

---

Tuesday  
May 14

**Provincial Election**

8:00 a.m. to 8:00 p.m.

**Polls for the communities west of Sooke:**

Otter Point Fire Hall  
Shirley Community Hall  
Port Renfrew Elementary School

**Advance voting:**

8:00 a.m. to 8:00 p.m.

Wednesday, Thursday, Friday and Saturday the week before general voting day.

Advance voting is available to any voter and all advance voting places are wheelchair accessible.

Advance polls in our area located at the SEAPARC Recreation Complex and the Sooke Community Hall.

The Elections BC web site has additional information:

<http://www.elections.bc.ca/>

See story in this newsletter for more information.

---

Wednesday  
May 15

**Shirley Fire Commission**

Meeting

7:00 p.m.

Shirley Community Hall

---

Tuesday  
May 21

**JDF Electoral Area Land Use Committee (LUC)**

Meeting

7:00 p.m.

JDF Electoral Area Planning Services Meeting Room  
2-6868 West Coast Road, Sooke BC

**Note:  
Meeting  
Cancelled**

Obtain the agenda the Friday before the meeting on the CRD website at:

[http://www.crd.bc.ca/agendas/juandefucalandusecom\\_/index.htm](http://www.crd.bc.ca/agendas/juandefucalandusecom_/index.htm)

Select the year and month of the agenda you wish to read.

The staff reports that accompany each meeting are available:

[http://www.crd.bc.ca/reports/juandefucalandusecom\\_/2013\\_index.htm](http://www.crd.bc.ca/reports/juandefucalandusecom_/2013_index.htm)

---

Monday  
May 27

**Otter Point Public Hearings**

7:00 p.m.

Otter Point Fire Hall  
3727 Otter Point Road

- Rezoning Application Z-04-12 for kennel use (2276 Kemp Lake Road).
  - Rezoning Application Z-06-12 for kennel use (3312 Otter Point Road).
-

---

Tuesday  
May 28      **Juan de Fuca Parks & Recreation Commission**  
Monthly Meeting  
3:00 p.m.  
JDF Electoral Area Services Meeting Room  
2-6868 West Coast Road, Sooke BC

---

Saturday  
June 1      **Juan de Fuca Community Trails Society**  
**Hike Trapp Mountain**  
9:00 a.m.  
  
Meet in the parking lot at Camp Barnard (the end of Young's Lake Road).  
  
A 7 hour, 15 kilometre hike on a rough forest road to a single track to the Trapp Mountain summit at an elevation of 704 metres and back.  
  
Bring a lunch, snack and water. Dress for the weather.  
  
Contact Rosemary Jorna, [sid2767@shaw.ca](mailto:sid2767@shaw.ca) for details.  
**Web site:**  
[www.jdfcommunitytrails.ca](http://www.jdfcommunitytrails.ca)

---

Tuesday  
June 4      **Juan de Fuca Emergency Services**  
Monthly Meeting  
7:00 p.m.  
JDF Search & Rescue Campus Training Building  
2028C Idlemore Road Sooke BC

---

Wednesday  
Jne 5      **Sooke & Electoral Area Parks & Recreation Commission (SEAPARC)**  
Monthly Meeting  
7:00 p.m.  
Board Room  
SEAPARC Leisure Complex  
2168 Philips Road Sooke BC

---

Mondays      **Karate for all ages**  
6:30 to 8:00 p.m.  
Shirley Community Hall  
  
Contact Alida Long: 250-642-4631

---

Mondays      **Pilates**  
10:00 to 11:00 a.m.  
Shirley Community Hall  
  
Level 1 class (suitable for beginners)  
  
Contact Sandra Smith:  
website: [www.svakayoga.com](http://www.svakayoga.com)  
email: [svakayoga@gmail.com](mailto:svakayoga@gmail.com)

---

---

Thursdays     **Shirley Quilters and Crafters**  
10:00 a.m. to 4:00 p.m.  
Shirley Community Hall  
  
Everyone welcome  
  
Contact Christien Shipton: 250-646-2687

---

Saturdays     **Pilates**  
9:30 am  
Shirley Community Hall  
  
Level 1 class (suitable for beginners)  
  
Contact: Sandra Smith  
website: [www.svakayoga.com](http://www.svakayoga.com)  
email: [svakayoga@gmail.com](mailto:svakayoga@gmail.com)

---

Thursdays &  
Sundays     **Nia Dance / Movement Class**  
**Thursdays:** 6:45 to 8:00 p.m.  
**Sundays:** 11:00 a.m. to 12:15 p.m.  
Shirley Community Hall  
  
Contact Melody Kimmell:  
250-646-2995  
[movingmelody@gmail.com](mailto:movingmelody@gmail.com)

---

## 2. OPSRRA EXTENDS BOUNDARY TO INCLUDE JORDAN RIVER

At OPSRRA's twenty-first Annual General Meeting on April 7, 2013, members voted to expand the Association's boundary to include Jordan River as one of the many changes to the association's constitution and bylaws.

Other changes unanimously approved at the AGM included:

- Identifying OPSRRA's expanded role as an organizer of community events such as forums, Town Hall and All Candidates meetings.
- Adding a definition for Associate member.
- Updating our bylaws.

The changes will come into effect once approved by the Provincial Registrar of Companies. The full text of the changes can be seen on OPSRRA's web site:

[www.opsrra.ca](http://www.opsrra.ca)

## 3. NEW BOARD OF DIRECTORS ELECTED AT OPSRRA AGM

OPSRRA elected a new Board of Directors at its Annual General Meeting.

Elected for a one-year term were:

President: Fiona McDannold

Vice-President: Bob Phillips

Treasurer: Brenda Mark

Directors: Sandy Barta, Marika Nagasaka, Arnie Campbell, and  
Brooke Fader

**Note:** Chris Knoglinger (Jordan River) was also elected but can't be confirmed as a Director until the changes to the OPSRRA constitutions and bylaws are approved by the Provincial Registrar of Companies (expected to happen by June).

## 4. OPSRRA ANNUAL REPORTS TO MEMBERS

The following annual reports were presented to the OPSRRA membership at the April AGM:

### OPSRRA Treasurer's Report: March 18, 2012 to April 7, 2013

Debits	
Hall rentals	\$70.00
Printing/postage	\$57.45
Sign repair	\$30.00
Bank fees	\$36.09
Web site fee	\$85.02
Advertising	\$36.41
<b>Total debits:</b>	<b>\$314.97</b>
Credits	
Memberships	\$125.00
Donations	\$132.20
<b>Total credits</b>	<b>\$257.20</b>



Main account balance:	\$724.49
Community account balance:	\$970.00
Petty cash balance:	\$36.96
<b>Total OPSRRA assets:</b>	<b>\$1,731.45</b>

Bob Phillips, Treasurer. Submitted April 7, 2013.

### Membership Report 2012 / 2013

Membership as of:	2012 AGM	2013 AGM
Shirley	62	73
Otter Point	321	316
<b>Total Voting Members:</b>	<b>383</b>	<b>389</b>
Associate Members:	22	34
<b>Total Membership:</b>	<b>405</b>	<b>423</b>

Note: Associate members do not reside in Otter Point and Shirley, do not have any voting privileges, but support the association and wish to receive the monthly newsletter.

OPSRRA continues to keep its membership up-to-date. During the past year we removed 14 voting members (moved, lost contact, deceased, moved to the Associate member list by request) and added 20 new members.

Erik James, Membership Coordinator. Submitted April 7, 2013.

### President's Report: Summary of OPSRRA Activities since March 2012 AGM

1. OPSRRA directors held 11 monthly directors' meetings and one membership meeting.
2. 13 monthly newsletters were sent to about 300 members and 25 non-members on e-mail.
3. Continued to up-date the OPSRRA web page ([www.opsrra.ca](http://www.opsrra.ca)), added on-line membership and business listing services and created an email contact for all directors using Gmail ([opsrra@gmail.com](mailto:opsrra@gmail.com)).
4. Added 2 new Community Notice Boards in Otter Point and now maintain 27 plus the 2 Welcome to Shirley and 3 Welcome to Otter Point signs. Began planting suitable plants, resistant to weather and wildlife, at the base of the Welcome signs.
5. Conducted on-line surveys on proposed changes to the OPSRRA Constitution and Bylaws, the Triathlon, JDF Services Building, Water and Community Services and prepared reports on the outcomes of some of the surveys for elected representatives and JDFEA Planning Services.
6. Directors attended meetings of the Otter Point OCP review committee and commented through-out the process with an emphasis on the protection of groundwater and the environment.
7. Participated in an assessment and provided comment on the CRD's Jordan River Park Reserve Lands properties.

8. Sponsored a public Town Hall meeting attended by local area elected representatives.
9. Participated in preliminary discussions about locating the proposed JDF Services Building in Otter Point, provided comment on the design and spoke in support of the rezoning of the property at the public hearing.
10. Organized a meeting about local water issues and concerns with representatives from the Shirley and Otter Point Fire Departments, the Kemp Lake Waterworks District, the Sheringham Estates Water Users and the BC Association of Landowners.
11. Attended a public meeting regarding a proposed residential development by the Brotherton's on former WFP forestry land in Otter Point and reported to members.
12. Queried TimberWest about their possible development plans for properties on the Shirley/Otter Point border and reported to members.
13. Organized a tour of local roads with our MLA and the Area Manager for the Ministry of Transportation and reported to members.
14. Attended meetings of the JDFEA Land Use Committee, Advisory Planning Commissions, Agricultural Advisory Planning Commission, Parks & Recreation Commission, Sooke Region Museum, Economic Development Commission, Kemp Lake Waterworks District, Shirley Fire Commission and the Otter Point Fire Commission.
15. Wrote the chairs of the JDF Economic Development Commission and Parks & Recreation Commission asking them to reconsider changing their meeting times from afternoons back to evenings.
16. Worked on updates for the OPSRRA constitution and bylaws.
17. Circulated preliminary designs for an OPSRRA logo to members for comment.
18. Did extensive updating and reformatting of the membership list.

Arnie Campbell, President. Submitted April 7, 2013

## 5. LOCAL FIRE DEPARTMENTS RECRUITING VOLUNTEERS

The Shirley and Otter Point Fire Departments are recruiting volunteer fire fighters. Our fire departments are totally dependent upon trained volunteers to provide fire protection. They are also the first responders for medical emergencies, traffic accidents and other emergency services in our community.

Volunteers must be:

- At least 16 (under 19 requires written permission of parent or guardian).
- In good health and physical condition.
- Pass a criminal record check.
- Able to attend Thursday evening practices.

Fire fighter training is provided in cooperation with the Justice Institute of BC. Opportunities for additional, specialized training are available. Consult with your local fire department for more information.

Otter Point: [www.otterpointfire.bc.ca](http://www.otterpointfire.bc.ca) or email [chief@otterpointfire.bc.ca](mailto:chief@otterpointfire.bc.ca)

Shirley: Phone 250-646- 2107

## 6. JORDAN RIVER COMMUNITY ASSOCIATION COMMENTS ON JORDAN RIVER PARKLAND

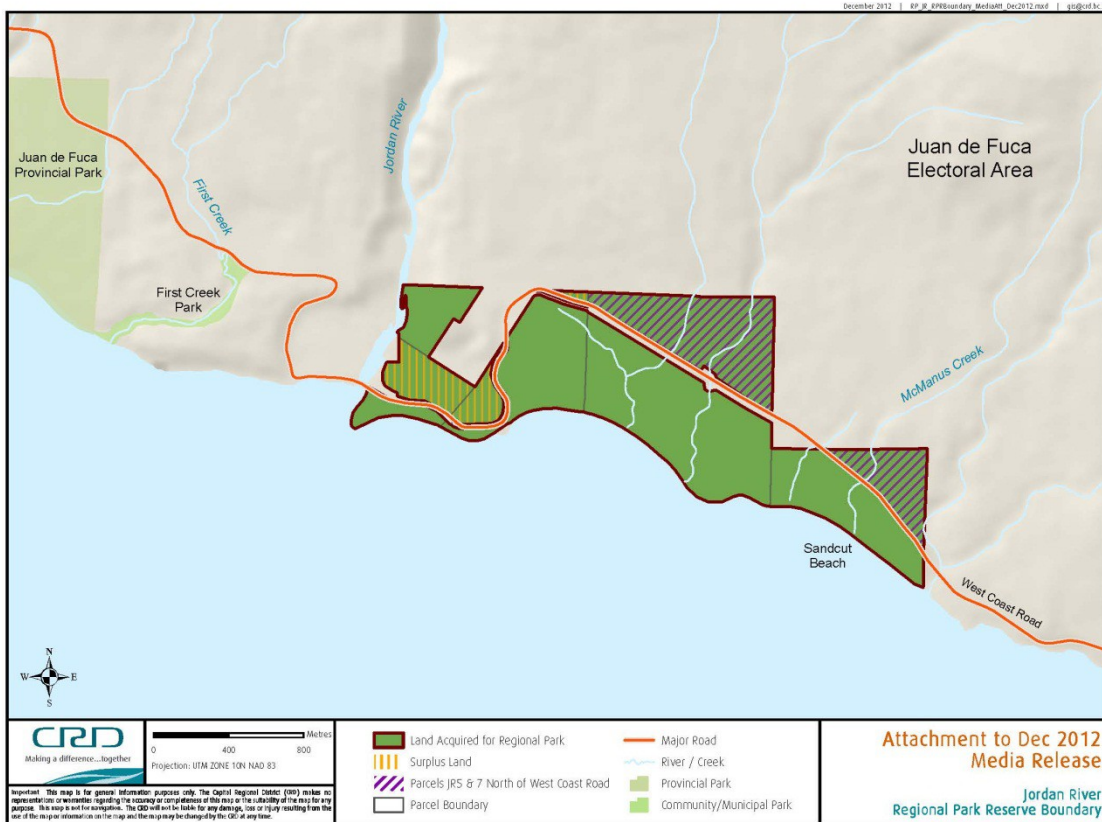
### Background

In December, 2012, the CRD's Regional Parks Committee accepted CRD staff recommendations regarding 180 hectares of land at Jordan River. The Jordan River property was part of 2,350 hectares purchased from Western Forest Products between 2010 and 2012 for \$18.8 million. Most of the Jordan River portion was intended for a new regional park. Based upon the staff recommendations the CRD's Regional Parks Committee decided that:

- Those areas known as JR2 and JR3, including the former maintenance yards, town site and the lands west of there to River Jordan be deemed surplus to regional park needs.
- The surplus land be held for sale to the Pacheedaht and T'Sou-ke First Nations until December 31, 2014 and
- If First Nations do not acquire the land, the Committee and Board consider other options including the sale to purchasers other than the First Nations.

In other words, the land below the highway from the River Jordan to Sandcut Beach will be kept for park (solid green on the map). The old Jordan River town site (yellow hatching on the map) will be held for 2 years for the Pacheedaht and T'Sou'ke First Nations; if they choose not to purchase, the situation will be looked at again.

No conclusion was arrived at about the Park Lands (green hatching on the map) north of West Coast Road (Highway 14).



Fast forward to March 2013 and another staff report came to the CRD Regional Park's Committee with updates on on-going management and site improvements at the Jordan River Regional Park, including:

- Rental of two buildings to the Queesto Community Forest Company.
- Rental of two residential buildings.
- Stopping vehicle access to the former WFP maintenance yard.
- Camp site improvements such as signage, toilets and parking.

### **Jordan River Community Association Report**

Meanwhile, the Jordan River Community Association became involved in the development of the park land and has submitted the following report on their progress to the OPSRRA newsletter.

The Jordan River community representatives had an official meeting with regional park officials on January 16th, and consensus was reached on a few items pertaining to future dealings between CRD and community members around the Jordan River regional park lands:

- Parks agreed that we needed an appropriate communications channel to update the community about news and developments around our new park lands. The CRD Manager of Regional Parks & Environmental Services sent the Jordan River Community a report which went to the CRD's Regional Park's Committee on March 13th and partially addresses this need. That said, it may be beneficial for CRD parks and the community to work on a format that may better respond to the communication needs around this project. It is important to have sufficient and engaging information.
- Parks suggested holding a design/community input session to gather visions and dreams for the design of the Point area of the park. This meeting has yet to be scheduled, and after discussion with park officials will be likely to take place next year instead of this year.

History has proven that parks have been great for the preservation of biodiversity. But parks have also been sources of extreme contentions. In this way, parks organizations, at whichever level, have become experts in negotiations, because much of their work is just that: negotiating competing and common interests. To that end, the best service that a parks organization can do to a community is to ensure maximum engagement and maintain frequent and effective communication with residents.

## **7. GOVERNANCE REPORT: CHALLENGE FOR CHANGES?**

The following is an edited version of a report prepared by OPSRRA in February, 2013 at the request of the Juan de Fuca Electoral Area (JDFEA) Regional Director. Its purpose was to provide background information on governance concerns and options in the JDFEA in preparation for a discussion about improvements that could be made to our local government that would not require CRD or provincial approval.

### **Our Report:**

There is a long history of trying to resolve governance issues in the JDFEA.

A number of communities within the JDFEA have consistently identified the following problems related to the present governance model:

1. The JDFEA's six sub regions of East Sooke, Willis Point, The Malahat, Port Renfrew, Jordan River, Shirley and Otter Point as well as the Rural Resource Lands are geographically scattered, have differing needs and too many committee responsibilities to be adequately represented by one elected representative; the JDFEA Regional Director.
2. Provincial legislation limits the delegation of responsibilities by a Regional Director, who is therefore required to sit on every committee which considers the expenditure of tax dollars.
3. The Alternate Director is an appointment of the Regional Director and is the only person permitted under provincial legislation to perform the duties of the Regional Director. The Alternate is not elected and does not have to be identified until after the election of the Regional Director.
4. The necessary time commitment required of the JDFEA Regional Director makes this close to a full-time job. This can exclude some candidates, who have other commitments, from standing for office.
5. Unlike municipal councils, where there is a probability that someone will continue in elected office, there is a lack of continuity when the sole elected representative in an Electoral Area is replaced. This can result in "swings" in policy and procedure.
6. With the exception of the limited mandate of the Land Use Committee, the Regional Director has no elected colleagues in the JDFEA to share the workload, discuss business, present varying points of view, etc.
7. Key decisions on Official Community Plans, zoning bylaws and land use are required, by provincial legislation, to be voted on by the full CRD Board or a committee of directors from the municipalities of Sooke, Langford, Colwood, Metchosin and the JDFEA; mostly urban communities and all but one from outside of the JDFEA.
8. Land use planning and community service issues in the Electoral Area are becoming more complex; critical decisions are made with limited planning resources and very little topographical, environmental, groundwater and watershed data.
9. Subdivisions and road specifications for the JDFEA must be approved by the province through the Ministry of Transportation and Infrastructure and don't have to conform to a community's Official Community Plan.
10. Subdivision applications not requiring zoning changes don't have to come to JDFEA Planning Services or go through any community consultation process.
11. Under provincial policy, unincorporated JDFEA properties bordering incorporated communities can be annexed without consultation or consent by either the JDFEA or the CRD.
12. Residents of the urban First Nation lands in View Royal and Esquimalt comprise 30% of the eligible voters in the JDFEA. They do not live in the Electoral Area and are not governed through the CRD

but are entitled to be represented by a regional director. This responsibility is delegated to the JDFEA Regional Director.

13. The provincial government is not required to consult with the CRD or the JDFEA about major changes in its land use policies (i.e. termination of Tree Farm Licenses, disposition of Crown Lands) although such changes can have major impacts for regional land use planning by the CRD and local planning within the JDFEA.
14. Electoral Areas are ineligible for some provincial grants or sharing in lottery revenues.
15. Staffing and services to, the JDFEA are provided by the CRD under their terms and rates of pay, but paid for by the ratepayers of the JDFEA.
16. There is no public process, internal to the JDFEA, to determine budgets or oversee spending.

At various times different alternatives to the present governance structure have been suggested by the community, the CRD and the province to address governance concerns in the JDFEA, including:

- Conducting a governance options study.
- Adding a second regional director to the JDFEA.
- Having either an elected or appointed Community Council.
- Considering the idea of a three member elected Electoral Area Body.
- Removing the urban First Nations in Esquimalt and View Royal from the JDFEA.
- Expanding the responsibilities of elected committees and commissions.
- Incorporating all the JDFEA lands west and north of Sooke into a new municipality.
- Introducing a department of the CRD that has exclusive responsibility for electoral areas.
- Developing a new governance model for rural, unincorporated electoral areas that abut incorporated urban areas, which would support their desire to remain rural and allow more participation in local decision-making.

All of the above require the approval of the province and/or the CRD Board of Directors and are unlikely to be options without support to change provincial policy and/or legislation.

### **The challenge**

Are there changes to governance within the JDFEA that can be made without requiring outside approval?

Some examples of governance changes which have been introduced in the past two years at the request of involved and concerned citizens of the JDFEA:

- Creation of a Memorandum of Understanding with the District of Sooke (DOS) to address mutual interests on lands on either side of the boundary between the DOS and the JDFEA.
- Sharing of recommendations of JDFEA Land Use Committee decisions with the community Advisory Planning Commissions.
- The JDFEA budget is now posted to the JDFEA web site after it is approved by the CRD Board.



## 8. OPSRRA SURVEY: JDFEA GOVERNANCE

This month's survey asks your opinion about governance in the Juan de Fuca Electoral Area (JDFEA) and some possible future governance options.

The term *governance* refers to how our elected representatives use the legislation and policies they rely upon to administer government. It can be influenced by the leadership style and values of the individuals we elect to be our government representatives as well as the size, cost, efficiency and effectiveness of their administration.

Good government is often a personal opinion based on how well you feel government is meeting your needs as well as the broader needs of your community.

For example, your personal opinion may be based on some of the following:

- Adequacy of bylaw enforcement (e.g., noise, animals, zoning).
- Access to services (e.g. land use planning, building permits and inspections).
- Access to your elected representative.
- Affordable property taxes.
- Somewhere to voice a concern or opinion (e.g. Land Use Committee, Parks & Recreation Commission, Advisory Planning Commission).

Your opinion on how well the community's needs are being met may be based on the following:

- Adequacy of fire protection.
- Number and location of parks and trails.
- Protection of drinking water sources for wells and community water systems.
- Promotion of local economic development opportunities.
- Protection of farmland.
- Support for maintaining a rural lifestyle.

[Click here](#) for a link to the May governance survey. Responses are anonymous and the results will be published in the June newsletter and shared with our Regional Director and provincial Member of the Legislative Assembly.

## 9. UPDATE: CRD'S REGIONAL GROWTH STRATEGY

The Capital Regional District's Regional Growth Strategy (RGS) is now known as the Regional Sustainability Strategy (RSS) and it is in the process of being reviewed. On April 16, 2013, the review came to the Juan de Fuca Electoral Area in the form of a presentation by senior staff working on the RSS. The session was followed by a question and answer session with the JDFEA Land Use Committee and the public in attendance.

Some of the topics considered in the RSS review seem to have little importance for a rural area like the JDFEA. Part of the discussion on April 16, 2013, was the Land Use Committee and the audience trying to inform the RSS review team about how our rural planning needs differ from those of our urban cousins. The discussion identified growth management, water protection, environmental health, resource management and food security as key considerations for our area which the RRS needs to address.

Here are some things which the RSS is looking at that would of importance to the JDFEA:

- Growth Management: Develop urban containment boundaries to identify where certain services such as community water and sewer would be allowed to extend. Use Official Community Plans reviews to determine Settlement Containment Areas in rural communities.
- Water Protection: Unlike the urban areas in the CRD, which have protected watersheds, rural areas do not. Density, uncontrolled water run-off and loss of areas to absorb and hold water contribute to rural water problems.
- Environmental Health: Prepare a regional ecosystem plan to incorporate the concept that nature needs half of the environment in the region to protect biodiversity. Consider the need to identify and protect rural drinking water sources.
- Resource Management: Cooperate with the province on private forest lands being removed from tenures to facilitate regional land use planning.
- Food Security: Support for farmers to promote farming opportunities as a source of employment and local food.

The next phase of the RSS review will be a Community Engagement which begins in the winter of 2014. Find more information about the RSS and the review on the web site: <http://sustainability.crd.bc.ca/>

## 10. QUESTIONS FOR PROVINCIAL ELECTION CANDIDATES

Your OPSRRA directors have arranged separate meetings, prior to the May 14, 2013 election, with the three candidates for the provincial constituency of Juan de Fuca, to review a list of local area concerns compiled by our association. The candidates are Carlos Serra (Green Party), Kerrie Reay (Liberal) and John Horgan (NDP).

OPSRRA gave the candidates the following list of questions in advance of these interviews.

### Local Governance Study

In the fall of 2011 OPSRRA asked the provincial government, our MLA, the JDFEA Regional Director and the Chair of the CRD Board of Directors to consider a local governance options study for the Juan de Fuca Electoral Area. The Minister of Community, Sports and Cultural Development agreed and directed staff to prepare a preliminary report outlining possible options. That report was never complete

If elected, will you support the completion of the report and if indicated, a governance options study?

### Regional Land Use Planning

Land use planning west of Sooke is a responsibility of the CRD. Most of the land is owned by the Crown and private forest companies.

The Crown land is designated for First Nations treaty settlements, the forest companies have established a pattern of selling their properties for non-forestry use and under the BC Mineral Tenure Act, "free entry" mineral claims are permitted. None of these activities requires consultation or cooperation with local or regional government and their land use planners.

For example, in 2007, the provincial government removed approximately 12,000 hectares of land in the JDFEA from Tree Farm License 25 without consulting the



EA, the CRD or the communities affected. Approximately 2,200 hectares of the former TFL lands are within the boundaries of the Otter Point and Shirley/Jordan River Official Community Plans. Western Forest Products plan was to use most of the 2,200 hectares for residential development. No provision was made by the Province for the establishment of amenities such as parks and trails or securing necessary local revenues for increased land use planning, firefighting and other community infrastructure services associated with this change in land use.

If elected, will you support land use planning consultations between the provincial government, CRD, the JDFEA, private forest companies, mining companies and local communities?

### Highway 14

Highway 14 is the main route through the communities of Otter Point, Shirley, Jordan River and Port Renfrew. The highway is visibly deteriorating due to the impact of heavy trucking and the increase in tourist traffic driving the Pacific Circle Route. The residents of these communities have been seeking improved maintenance and upgrades to make the highway safer and more usable for vehicles, cyclists and walkers.

What will you and your government do to improve this road?

### Water Issues

Climate change and the resulting drier summers, along with the increase in development in the JdFEA, will result in serious consequences for our rural water supply.

If elected, would you support changes to the Provincial Water Act and the Local Government Act; most specifically in regard to rural issues such as groundwater, wells and small water systems?

### Juan de Fuca Trail

Juan de Fuca Provincial Park is a gem on our doorstep. In March 2003, a *Juan De Fuca Provincial Park Purpose Statement and Zoning Plan* were approved by the Environmental Stewardship Division. At that time there were known management issues. However, ten years later the responses indicated to deal with these management issues have not been implemented even though there has been a huge increase in users and a corresponding impact on the park.

The 2003 *Purpose Statement and Zoning Plan* describe 4 roles for the Park, with the primary role being to “protect a highly scenic and unique shoreline area between (Sooke) and Port Renfrew along the Strait of Juan de Fuca. The park encompasses a wide spectrum of natural values from forests to wildlife that must be protected and managed to reflect the purpose for which it was created”. The other three roles are to provide recreational opportunities, protect cultural values and provide research opportunities.

The *18 Known Management Issues and Responses* detailed in the 2003 Plan include:

- Lack of management direction for the entire park.
- Serious enforcement issues at Sombrio Beach.
- Access roads to Sombrio and Parkinson Creek parking lots are not in the park.
- Lack of protected foreshore.
- Protection of the Parkinson Creek seal grotto.

- Inadequate sanitary facilities.
- Upgrades to failing facilities needed to minimize environmental damage.

What is your position on funding and management for BC Parks, specifically a management plan for Juan de Fuca Provincial Park?

### **Compensation for local Fire Departments**

Local volunteer fire departments in Shirley and Otter Point are the first responders for motor vehicle accidents on the highway. This is an increasing cost to local ratepayers, which is in effect subsidizing the BC Ambulance service for care given to patients who are not local residents.

If elected, would you work towards a method of provincial compensation to the local fire commissions to offset their costs?

### **Funding for Improved Environmental Mapping**

There has been very little environmental mapping west of Sooke to identify and protect significant eco-systems, aquifers, watersheds, streams and wildlife corridors. The CRD and the Regional Director of the JDFA are presently using Federal Gas Tax funds to carry out limited environmental mapping.

If elected, will you support provincial funding for such mapping?

### **High Speed Internet for Jordan River**

In 2011 the government announced an initiative to bring high speed internet to 97% of rural B.C. To date, Jordan River is still without this service. The neighbouring community of Shirley, 5 km east of Jordan River, was connected to high speed internet in late 2011 through an Industry Canada grant to Shaw Cable.

Making high speed internet available to Jordan River will enable a cell phone carrier to install a cell tower nearby, thus providing cellular service to the residents of Jordan River who chronically suffer from inadequate telephone service and provide visitors to the area and hikers on the Juan De Fuca Trail with access to 911 service.

Will your government commit to follow through with this initiative?

## **11. CAMP BARNARD HOSTING 2015 SCOUTING JAMBOREE**

Grace Seabrook, Chair of the Camp Barnard Committee, submitted the first in a series of reports from Scouts Canada on preparations for the 2015 Scouting Jamboree that will take place at Camp Barnard in Otter Point.

Contact:

Phone: 250-592-5747

Email: [campcommittee@victoriascouts.ca](mailto:campcommittee@victoriascouts.ca)

Web site: [www.victoriascouts.ca](http://www.victoriascouts.ca)

Preparations for PJ 2015 are well underway at Camp Barnard. Surveying, terracing for tent sites, upgrading water system, widening roads - these are just a few of the jobs that are underway. We want to update one of our kitchens - 40 year old propane stoves are just not up to the task of feeding 600 volunteers and will be replaced. The swimming dock on Young's Lake, which is always in great demand over the summer, will be expanded to make 2 separate swim areas. Our biggest project and the one that we hope can be completed in time for the Jamboree, is a new and fully accessible washroom for the

Keego Kitchen area; it will be built in stages as finances allow. These projects, plus the on-going up-keep means our staff and volunteers are very busy. These projects will be a great boon to all who use the camp now and in the future and not just the Jamboree attendees.

The volunteers who organize PJ15 come from all over BC. They will meet several times at Camp Barnard over the next 2 years and look forward to getting to know the area and all the programming opportunities that it has to offer.

Did you know that Camp Barnard hosted 15,000 camper nights last year? That's a lot of kids getting out of doors - about 60% Scouting and 40% other youth groups. It is also a lot of meals getting cooked in our 3 kitchens and a huge need for good infrastructure. While camp fees cover most operational costs they do not leave much for maintenance and new building so fundraising is big on the Camp Committee agenda. Currently we are conducting a "Blockhead" campaign - \$5 buys a block and gets your name on a plaque. We are half-way there; another \$4,500 and we will have the blocks we need for the new bathroom! We also have our 7th Annual Barnard Club Breakfast happening on Tuesday, June 4 at the Hotel Marriott in Victoria with guest speaker, Bob McDonald, CBC's host of Quirks & Quarks. You can learn more about this at: [www.victoriascouts.ca](http://www.victoriascouts.ca).

Weekly work parties are held on Tuesdays - come for a visit and see what we are doing; maybe even lend a hand!

## **12. KEMP LAKE WATERWORKS ANNUAL GENERAL MEETING**

The Kemp Lake Waterworks District (KLWD) held its Annual General Meeting on April 30, 2013. There were 11 KLWD users in attendance. KLWD provides water to 454 residences in Otter Point and delivers over 28 million Imperial gallons per year.

In his Annual Report, Kevan Brehart, Chair of the KLWD Board of Trustees, reported that over the past year 4 residences were added to the system and that water consumption dropped by 7% compared to a 10% increase in 2010. Water samples are laboratory tested weekly and all reports have been good. The KLWD remains concerned about water loss through line leakage. This is about 30% of the water pumped and the KLWD will be looking at contracting an assessment using more sophisticated technologies. He also noted that meeting the 4-3-2-1 safe water standards as set by the Vancouver Island Health Authority (VIHA) is a major time commitment for the KLWD Trustees involving complex discussions with the Capital Regional District (CRD), the provincial government and engineering consultants. At this point, the CRD component needs to be completed to move toward developing and costing a plan to connect the KLWD to CRD water (for more information on this see the OPSRRA Newsletter February 2013).

The audited statements for 2012 were presented along with the 2013 budget. The budget for 2013 is roughly \$12,000 higher than 2012; mostly because of additional projected engineering costs to become 4-3-2-1 compliant. It was explained that this is the basic operating budget needed to deliver water. Another budget will be drawn up to handle the revenues and expenditures associated with actually connecting to the CRD water system, including the installation of about 2 km of water pipe. KLWD will be holding more meetings for its users in the coming months on this matter.

There was an election for one trustee position. Richie Birch was elected by acclamation to another 3 year term. A motion was also unanimously passed to increase the trustee honoraria by 10% for 2013. The 4-3-2-1 Compliance Project

has been and will continue to be a very complex and time consuming task for the trustees.

The meeting concluded with a general question and answer period. KLWD trustees will be proposing that the KLWD remain in place to distribute the water purchased from the CRD. The Trustees will be recommending that after connecting to the CRD water supply that the KLWD keep the pumping equipment at Kemp Lake and the system reservoirs for fire protection and as emergency back-up should the CRD supply get disrupted. There was some discussion concerning future residential development and a latecomer fee mechanism.

### **13. JDFEA ADMIN SERVICES BUILDING GOES TO TENDER**

Progress continues on the plan to construct a dedicated administration building for the Juan de Fuca Electoral Area (JDFEA). This building will replace a rented facility in Sooke that is used by JDFEA Planning Services, Building Inspection, Parks & Recreation and Bylaw Enforcement. Occupancy is planned for December 31, 2013. The new facility will be located in the Business Park located at 3220 Otter Point Road in Otter Point. The budget for the project is \$1,500,000 including \$400,000 for the purchase of the property and a \$200,000 contingency. If the construction costs exceed \$900,000 the project may need to go to referendum.

The CRD released the following "Invitation to Tender" information on Friday, April 26:

#### **Summary Details:**

Capital Regional District

Construction of the Juan de Fuca Administration Building, Contract 13-1763

Invitation to Tender

Sealed Tenders, plainly marked on the envelope "Tender for Construction of the Juan de Fuca Administration Building, Contract 13-1763" will be received by the General Manager, Parks & Environmental Services of the Capital Regional District at their offices at 625 Fisgard Street, Victoria, British Columbia up to 2 p.m. local time on Friday, May 3, 2013, at which time they will be opened in public.

The works to be constructed under this Contract generally include the following:

Construction of a new 4600 square foot public administration building located at 3995 Otter Point Road, Sooke Business Park, BC, including all building, civil, structural, mechanical, and electrical work. The project must be completed by October 31, 2013.

Specifications, Drawings, Contract Documents, and Tender Form may be seen at the offices of the Vancouver Regional Construction Association, 3636 East 4th Avenue, Vancouver, BC; the Southern Vancouver Island Construction Association, 1075 Alston Street, Victoria, BC; and the Capital Regional District, 625 Fisgard Street, Victoria, BC on or after April 22, 2013.

Copies may be obtained from the Capital Regional District, Parks & Environmental Services department, on payment of \$25.00 (GST included) for each copy requested, the sum of which is non-refundable. Digital copies may also be downloaded from

[www.crd.bc.ca](http://www.crd.bc.ca) (Doing Business/Business Opportunities) and at [www.bcbid.gov.bc.ca](http://www.bcbid.gov.bc.ca).

The lowest or any tender will not necessarily be accepted.

A mandatory pre-tender site meeting will be held at 3995 Otter Point Road on Monday, April 29, 2013 at 1 p.m.

For information and/or enquiries on this project please contact Doran Musgrove at 250.360.3294.

#### **14. REPORT: NEW TRAIL OPPORTUNITIES IN OUR AREA**

Sid Jorna, President of the Juan de Fuca Community Trails Society and a member of the Juan de Fuca Parks & Recreation Advisory Commission, submitted the following:

Ron Hamilton, Manager of Community Parks for the Juan de Fuca Electoral Area invited interested groups to an informal discussion of trails in the area on April 25. He wished to know where people used trails and what were their state and status. Primarily, he wished a discussion of which opportunities they see to achieve linkages. Attending were representatives from JdF Community Trails Society, Friends of Eaglecrest Park Society, Back Country Horsemen and the Sooke Saddle Club.

The current trails are well used, greatly valued by the community and link various parts of the community. People described their current trail usage but voiced concerns for these trails as they are primarily on private lands and on lands subject to First Nations treaty negotiations. A solid plan will be needed to serve all interests in the area. The societies provided a comprehensive set of community objectives for trails to serve as a guideline for future parks or trail rights of way.

Discussion focused on a possible link between the Galloping Goose Trail, the emerging Otter Point Trail System (centered on William Simmons Memorial Park) and linkages to Eaglecrest Park and Northwest to the Muir Creek system and beyond; eventually to connect to the Juan de Fuca Marine Trail and to Port Renfrew. A number of possibilities were discussed, but specific routes would depend on opportunities afforded by park dedication upon subdivision, government and First Nation support, forestry companies and other factors.

#### **15. OPSRRA SMALL BUSINESS LISTINGS**

**Do you operate a small business?** Are you an OPSRRA member? OPSRRA is offering a free business listing service for members, on its web site: [www.opsrra.ca](http://www.opsrra.ca). We will list non-members for a suitable donation!

The purpose of this service is to provide an opportunity for businesses in Jordan River, Shirley and Otter Point to advertise their goods and services to their local community. We anticipate having listings for accommodation, farm produce, art, furniture-making, fishing charters, eco-tours, firewood, knitting, soaps, landscaping, bookkeeping, sewing, spas and more. More information, businesses already listed, and an on-line registration form are available on OPSRRA's web site ([www.opsrra.ca](http://www.opsrra.ca)) under **Business Listings**.

**Note:** OPSRRA does not accept responsibility for the services provided. Always check references and ask for confirmation of Work Safe B.C. Registration if applicable.

**Support local businesses.** [The OPSRRA web site has more information about the following business listings](#)

1001 Welding & Equipment Repair

Accent in Grooming

A Point of View B & B

ALM Organic Farm

Beaches West B & B

Bear Home Remodelling

Birds Edge Press

Coastal Crunch Granola

Eco Craft Lights

Eagle Cove Beachfront Guest Suites

Farmer Notary—Shawna Farmer, Notary Public.

Full Circle Seeds

Glen's Gardening Company

Heron's Rest B & B

"In A Fix" Bookkeeping & Accounting Services

Jambo Pet Sitting Service

Kemp Lake Store Cafe

Kirsten Sykes, Realtor

Knotty Beds by Nature

Le Sooke Spa

Malahat Farm Heritage Cottage

Ocean Wilderness Inn

Otter Point Beach House

Otter Point Electrical Service

Perfect Grade Plumbing

Reflexology by Marlene Barry  
Rhythm's Edge Percussion Shop  
Road's End Construction  
Sandy's Drywall Ltd  
Stick in the Mud Coffee House  
Straitview Ridge Bed & Breakfast  
Three Sisters Farm  
Tugwell Creek Honey Farm  
Tugwell Creek Meadery  
Welcome Wagon  
Wood Visions

## **16. BACK ISSUES OF THE OPSRRA NEWSLETTER**

Back issues of the OPSRRA newsletter are available on the OPSRRA web site.

---

This monthly newsletter is prepared by the directors of OPSRRA. It is available to members by e-mail and to others on our web site: [www.opsrra.ca](http://www.opsrra.ca). To have an item you would like to have considered for placement in the newsletter, or make a comment about the newsletter, contact an OPSRRA director or email [opsrra@gmail.com](mailto:opsrra@gmail.com).

OPSRRA tries to verify the correctness of the information in this newsletter; if we got it wrong we will acknowledge that and make a correction as quickly as possible.

---